

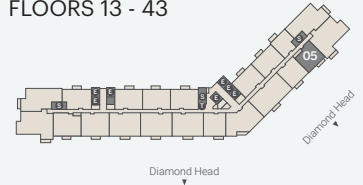
1.1

Tower

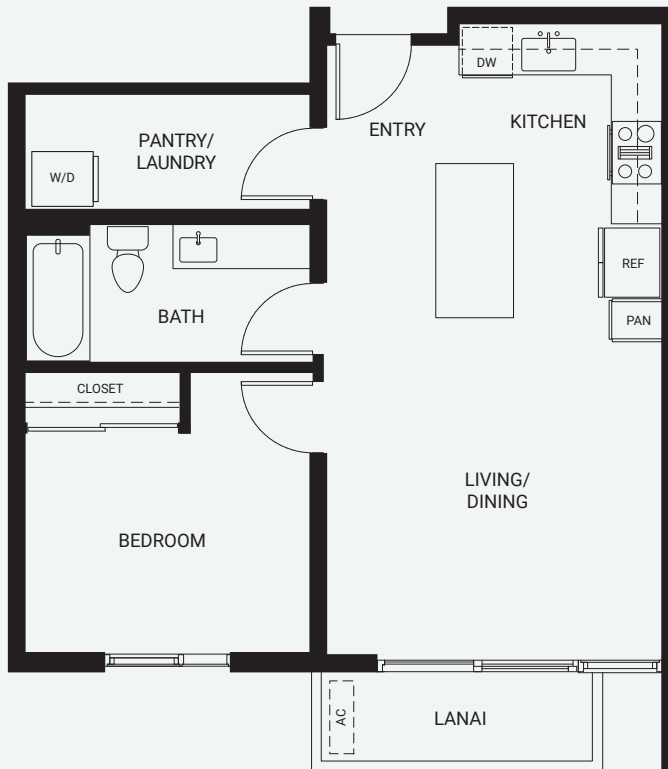
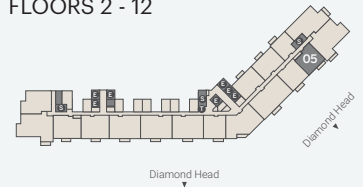
Residence 05

1 Bedroom/1 Bath
Total: 650 Sq. Ft.
Interior: 605 Sq. Ft.
Lanai: 45 Sq. Ft.

FLOORS 13 - 43



FLOORS 2 - 12



Sales Gallery
Ala Moana Center, Level 3 Ewa Wing
1450 Ala Moana Blvd. Suite 3505, Honolulu, Hawaii 96814

808-751-2599
KuileiPlace.com

Exclusive Project Broker: COMPASS RB-23206. Courtesy to qualifying brokers; see Project Broker for details.

DISCLAIMER: Kuilei Place ("Project") is a proposed condominium project that does not yet exist, and the development concepts therefore continue to evolve and are subject to change without notice. All figures, facts, information, and prices are approximate and may change at any time. All renderings, maps, site plans, photos, views, floor plans, graphic images, drawings, and other information depicted on this handout are illustrative only, are provided to assist the purchaser in visualizing the units and the Project, may not be accurately depicted, and are subject to change at any time. Visual depictions of the Project and units contained in this handout are artists' renderings and should not be relied upon in deciding to purchase a unit, and the developer makes no guarantee, representation, or warranty whatsoever that the Project and units depicted will ultimately appear as shown. All amenities are proposed only and access to any amenities may be subject to the payment of fees, membership requirements, and other restrictions. The developer does not own or control the land outside of the Project and does not guarantee the current or future use thereof. To the extent permitted by law, the developer disclaims all liability that may arise out of errors or omissions in the content of this handout, including claims for actual or consequential damages. This is not intended to be an offering or solicitation of sale in any jurisdiction where the Project is not registered in accordance with applicable law or where such offering or solicitation would otherwise be prohibited by law.

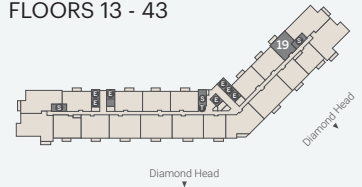
WARNING: THE CALIFORNIA DEPARTMENT OF REAL ESTATE HAS NOT INSPECTED, EXAMINED, OR QUALIFIED THIS OFFERING.



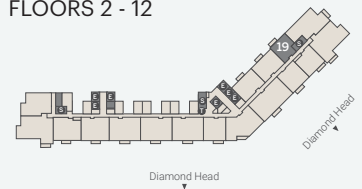
Residence 19

1 Bedroom/1 Bath
Total: 548 Sq. Ft.
Interior: 507 Sq. Ft.
Lanai: 41 Sq. Ft.

FLOORS 13 - 43



FLOORS 2 - 12



Sales Gallery
Ala Moana Center, Level 3 Ewa Wing
1450 Ala Moana Blvd. Suite 3505, Honolulu, Hawaii 96814

808-751-2599
KuileiPlace.com

Exclusive Project Broker: COMPASS RB-23206. Courtesy to qualifying brokers; see Project Broker for details.

DISCLAIMER: Kuilei Place ("Project") is a proposed condominium project that does not yet exist, and the development concepts therefore continue to evolve and are subject to change without notice. All figures, facts, information, and prices are approximate and may change at any time. All renderings, maps, site plans, photos, views, floor plans, graphic images, drawings, and other information depicted on this handout are illustrative only, are provided to assist the purchaser in visualizing the units and the Project, may not be accurately depicted, and are subject to change at any time. Visual depictions of the Project and units contained in this handout are artists' renderings and should not be relied upon in deciding to purchase a unit, and the developer makes no guarantee, representation, or warranty whatsoever that the Project and units depicted will ultimately appear as shown. All amenities are proposed only and access to any amenities may be subject to the payment of fees, membership requirements, and other restrictions. The developer does not own or control the land outside of the Project and does not guarantee the current or future use thereof. To the extent permitted by law, the developer disclaims all liability that may arise out of errors or omissions in the content of this handout, including claims for actual or consequential damages. This is not intended to be an offering or solicitation of sale in any jurisdiction where the Project is not registered in accordance with applicable law or where such offering or solicitation would otherwise be prohibited by law.

WARNING: THE CALIFORNIA DEPARTMENT OF REAL ESTATE HAS NOT INSPECTED, EXAMINED, OR QUALIFIED THIS OFFERING.



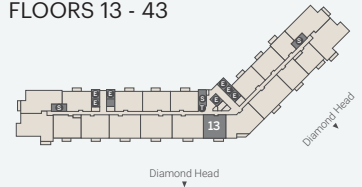
1.4

Tower

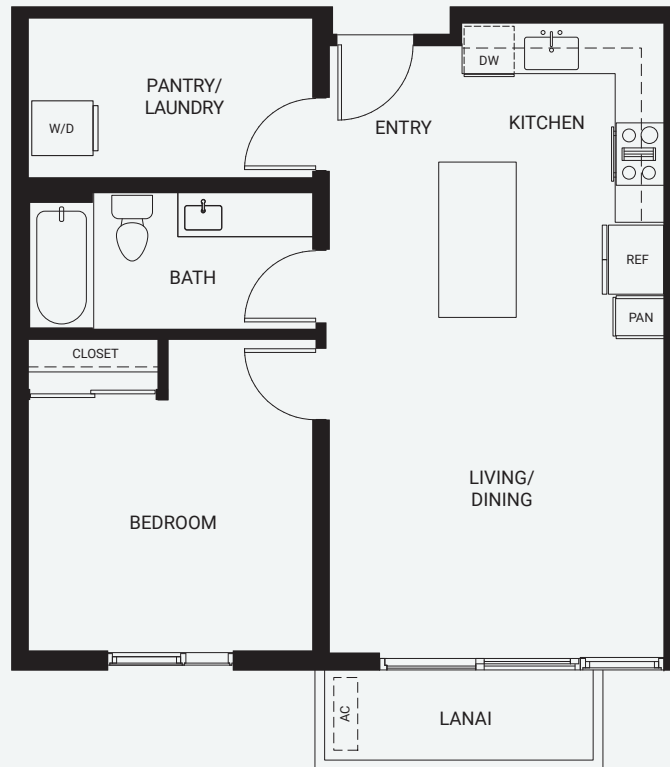
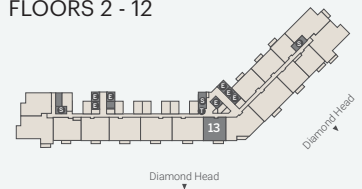
Residence 13

1 Bedroom/1 Bath
Total: 685 Sq. Ft.
Interior: 640 Sq. Ft.
Lanai: 45 Sq. Ft.

FLOORS 13 - 43



FLOORS 2 - 12



Sales Gallery
Ala Moana Center, Level 3 Ewa Wing
1450 Ala Moana Blvd. Suite 3505, Honolulu, Hawaii 96814

808-751-2599
KuileiPlace.com

Exclusive Project Broker: COMPASS RB-23206. Courtesy to qualifying brokers; see Project Broker for details.

DISCLAIMER: Kuilei Place ("Project") is a proposed condominium project that does not yet exist, and the development concepts therefore continue to evolve and are subject to change without notice. All figures, facts, information, and prices are approximate and may change at any time. All renderings, maps, site plans, photos, views, floor plans, graphic images, drawings, and other information depicted on this handout are illustrative only, are provided to assist the purchaser in visualizing the units and the Project, may not be accurately depicted, and are subject to change at any time. Visual depictions of the Project and units contained in this handout are artists' renderings and should not be relied upon in deciding to purchase a unit, and the developer makes no guarantee, representation, or warranty whatsoever that the Project and units depicted will ultimately appear as shown. All amenities are proposed only and access to any amenities may be subject to the payment of fees, membership requirements, and other restrictions. The developer does not own or control the land outside of the Project and does not guarantee the current or future use thereof. To the extent permitted by law, the developer disclaims all liability that may arise out of errors or omissions in the content of this handout, including claims for actual or consequential damages. This is not intended to be an offering or solicitation of sale in any jurisdiction where the Project is not registered in accordance with applicable law or where such offering or solicitation would otherwise be prohibited by law.

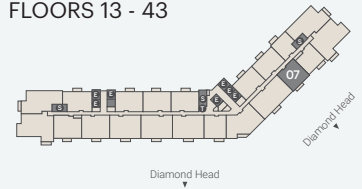
WARNING: THE CALIFORNIA DEPARTMENT OF REAL ESTATE HAS NOT INSPECTED, EXAMINED, OR QUALIFIED THIS OFFERING.



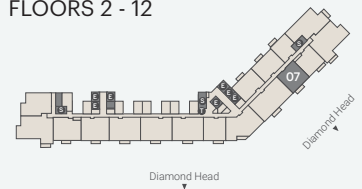
Residence 07

1 Bedroom/1 Bath
 Total: 686 Sq. Ft.
 Interior: 641 Sq. Ft.
 Lanai: 45 Sq. Ft.

FLOORS 13 - 43



FLOORS 2 - 12



Sales Gallery
 Ala Moana Center, Level 3 Ewa Wing
 1450 Ala Moana Blvd. Suite 3505, Honolulu, Hawaii 96814

808-751-2599
KuileiPlace.com

Exclusive Project Broker: COMPASS RB-23206. Courtesy to qualifying brokers; see Project Broker for details.

DISCLAIMER: Kuilei Place ("Project") is a proposed condominium project that does not yet exist, and the development concepts therefore continue to evolve and are subject to change without notice. All figures, facts, information, and prices are approximate and may change at any time. All renderings, maps, site plans, photos, views, floor plans, graphic images, drawings, and other information depicted on this handout are illustrative only, are provided to assist the purchaser in visualizing the units and the Project, may not be accurately depicted, and are subject to change at any time. Visual depictions of the Project and units contained in this handout are artists' renderings and should not be relied upon in deciding to purchase a unit, and the developer makes no guarantee, representation, or warranty whatsoever that the Project and units depicted will ultimately appear as shown. All amenities are proposed only and access to any amenities may be subject to the payment of fees, membership requirements, and other restrictions. The developer does not own or control the land outside of the Project and does not guarantee the current or future use thereof. To the extent permitted by law, the developer disclaims all liability that may arise out of errors or omissions in the content of this handout, including claims for actual or consequential damages. This is not intended to be an offering or solicitation of sale in any jurisdiction where the Project is not registered in accordance with applicable law or where such offering or solicitation would otherwise be prohibited by law.

WARNING: THE CALIFORNIA DEPARTMENT OF REAL ESTATE HAS NOT INSPECTED, EXAMINED, OR QUALIFIED THIS OFFERING.



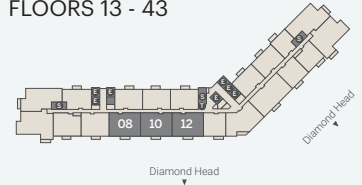
2.1

Tower

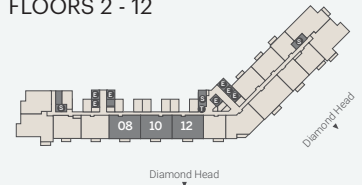
Residence 08, 10, 12

2 Bedroom/2 Bath
Total: 928 Sq. Ft.
Interior: 883 Sq. Ft.
Lanai: 45 Sq. Ft.*

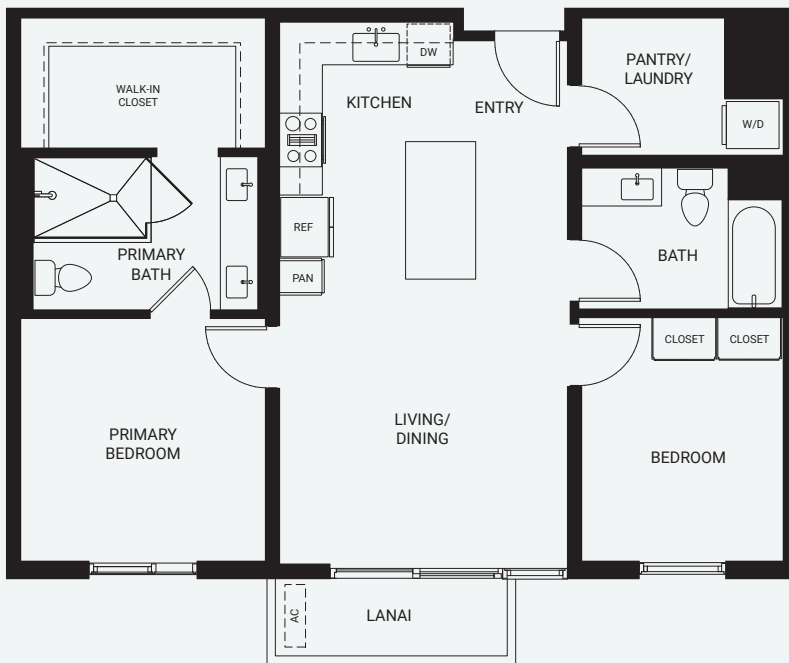
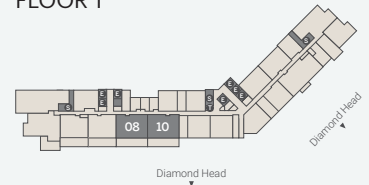
FLOORS 13 - 43



FLOORS 2 - 12



FLOOR 1



*Residence 108 & 110 - Private Yard, 365 Sq.Ft.



Sales Gallery
Ala Moana Center, Level 3 Ewa Wing
1450 Ala Moana Blvd. Suite 3505, Honolulu, Hawaii 96814

808-751-2599
KuileiPlace.com

Exclusive Project Broker: COMPASS RB-23206. Courtesy to qualifying brokers; see Project Broker for details.

DISCLAIMER: Kuilei Place ("Project") is a proposed condominium project that does not yet exist, and the development concepts therefore continue to evolve and are subject to change without notice. All figures, facts, information, and prices are approximate and may change at any time. All renderings, maps, site plans, photos, views, floor plans, graphic images, drawings, and other information depicted on this handout are illustrative only, are provided to assist the purchaser in visualizing the units and the Project, may not be accurately depicted, and are subject to change at any time. Visual depictions of the Project and units contained in this handout are artists' renderings and should not be relied upon in deciding to purchase a unit, and the developer makes no guarantee, representation, or warranty whatsoever that the Project and units depicted will ultimately appear as shown. All amenities are proposed only and access to any amenities may be subject to the payment of fees, membership requirements, and other restrictions. The developer does not own or control the land outside of the Project and does not guarantee the current or future use thereof. To the extent permitted by law, the developer disclaims all liability that may arise out of errors or omissions in the content of this handout, including claims for actual or consequential damages. This is not intended to be an offering or solicitation of sale in any jurisdiction where the Project is not registered in accordance with applicable law or where such offering or solicitation would otherwise be prohibited by law.

WARNING: THE CALIFORNIA DEPARTMENT OF REAL ESTATE HAS NOT INSPECTED, EXAMINED, OR QUALIFIED THIS OFFERING.



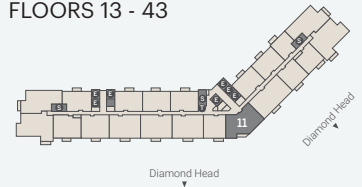
2.2

Tower

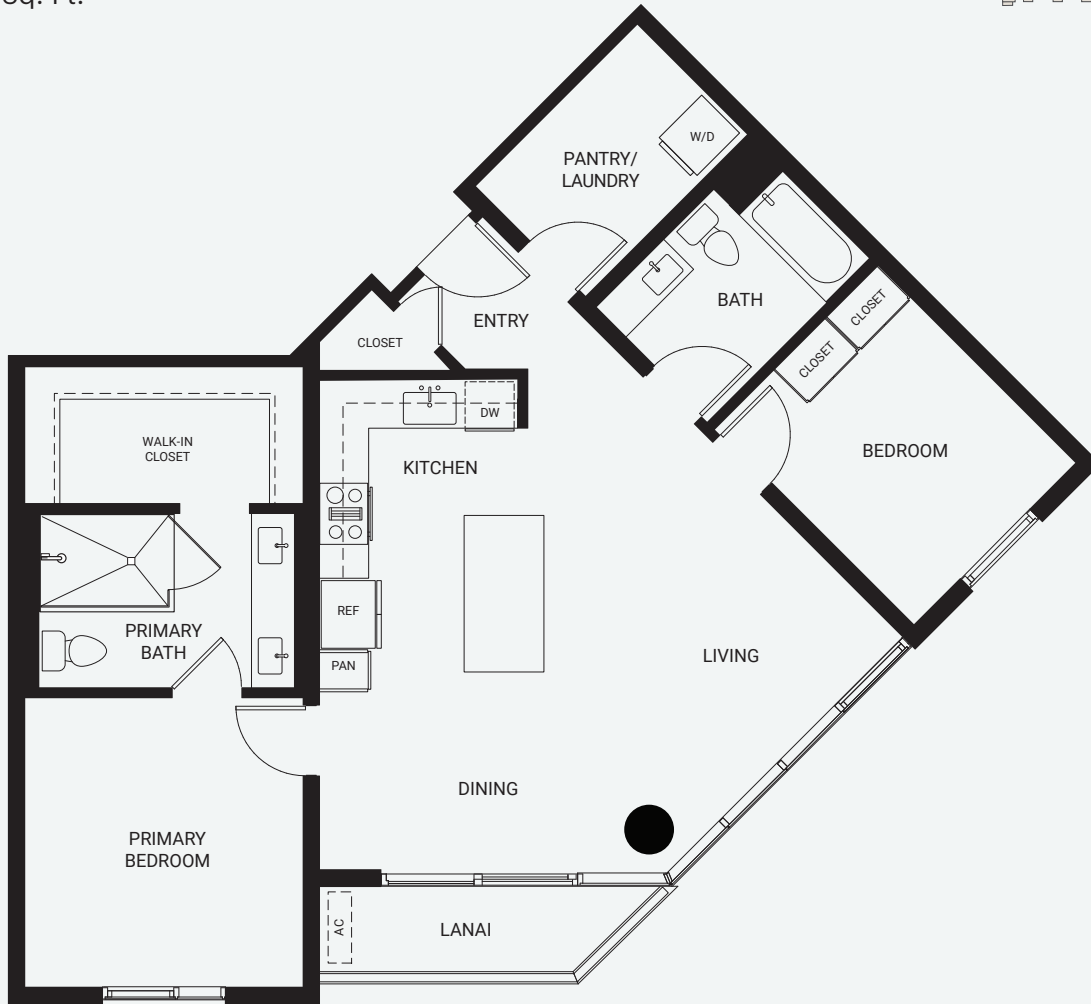
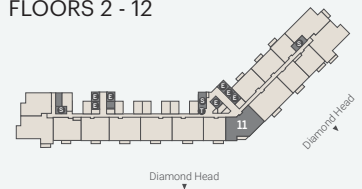
Residence 11

2 Bedroom/2 Bath
Total: 1,035 Sq. Ft.
Interior: 987 Sq. Ft.
Lanai: 48 Sq. Ft.

FLOORS 13 - 43



FLOORS 2 - 12



Sales Gallery
Ala Moana Center, Level 3 Ewa Wing
1450 Ala Moana Blvd. Suite 3505, Honolulu, Hawaii 96814

808-751-2599
KuileiPlace.com

Exclusive Project Broker: COMPASS RB-23206. Courtesy to qualifying brokers; see Project Broker for details.

DISCLAIMER: Kuilei Place ("Project") is a proposed condominium project that does not yet exist, and the development concepts therefore continue to evolve and are subject to change without notice. All figures, facts, information, and prices are approximate and may change at any time. All renderings, maps, site plans, photos, views, floor plans, graphic images, drawings, and other information depicted on this handout are illustrative only, are provided to assist the purchaser in visualizing the units and the Project, may not be accurately depicted, and are subject to change at any time. Visual depictions of the Project and units contained in this handout are artists' renderings and should not be relied upon in deciding to purchase a unit, and the developer makes no guarantee, representation, or warranty whatsoever that the Project and units depicted will ultimately appear as shown. All amenities are proposed only and access to any amenities may be subject to the payment of fees, membership requirements, and other restrictions. The developer does not own or control the land outside of the Project and does not guarantee the current or future use thereof. To the extent permitted by law, the developer disclaims all liability that may arise out of errors or omissions in the content of this handout, including claims for actual or consequential damages. This is not intended to be an offering or solicitation of sale in any jurisdiction where the Project is not registered in accordance with applicable law or where such offering or solicitation would otherwise be prohibited by law.

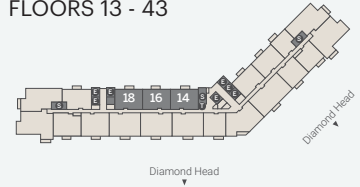
WARNING: THE CALIFORNIA DEPARTMENT OF REAL ESTATE HAS NOT INSPECTED, EXAMINED, OR QUALIFIED THIS OFFERING.



2.3

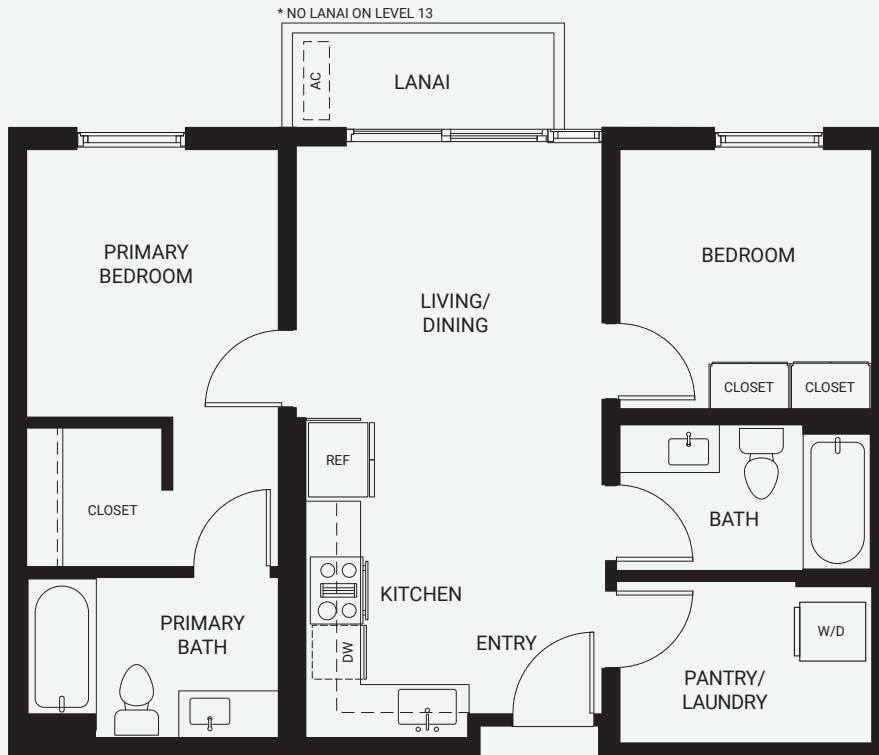
Tower

FLOORS 13 - 43



Residence 14, 16, 18

2 Bedroom/2 Bath
 Total: 747 Sq. Ft.
 Interior: 706 Sq. Ft.
 Lanai: 41 Sq. Ft.*



Sales Gallery
 Ala Moana Center, Level 3 Ewa Wing
 1450 Ala Moana Blvd. Suite 3505, Honolulu, Hawaii 96814

808-751-2599
 KuileiPlace.com

Exclusive Project Broker: COMPASS RB-23206. Courtesy to qualifying brokers; see Project Broker for details.

DISCLAIMER: Kuilei Place ("Project") is a proposed condominium project that does not yet exist, and the development concepts therefore continue to evolve and are subject to change without notice. All figures, facts, information, and prices are approximate and may change at any time. All renderings, maps, site plans, photos, views, floor plans, graphic images, drawings, and other information depicted on this handout are illustrative only, are provided to assist the purchaser in visualizing the units and the Project, may not be accurately depicted, and are subject to change at any time. Visual depictions of the Project and units contained in this handout are artists' renderings and should not be relied upon in deciding to purchase a unit, and the developer makes no guarantee, representation, or warranty whatsoever that the Project and units depicted will ultimately appear as shown. All amenities are proposed only and access to any amenities may be subject to the payment of fees, membership requirements, and other restrictions. The developer does not own or control the land outside of the Project and does not guarantee the current or future use thereof. To the extent permitted by law, the developer disclaims all liability that may arise out of errors or omissions in the content of this handout, including claims for actual or consequential damages. This is not intended to be an offering or solicitation of sale in any jurisdiction where the Project is not registered in accordance with applicable law or where such offering or solicitation would otherwise be prohibited by law.

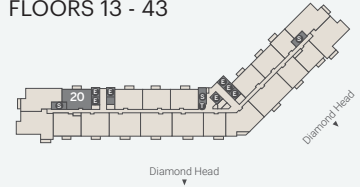
WARNING: THE CALIFORNIA DEPARTMENT OF REAL ESTATE HAS NOT INSPECTED, EXAMINED, OR QUALIFIED THIS OFFERING.



2.4

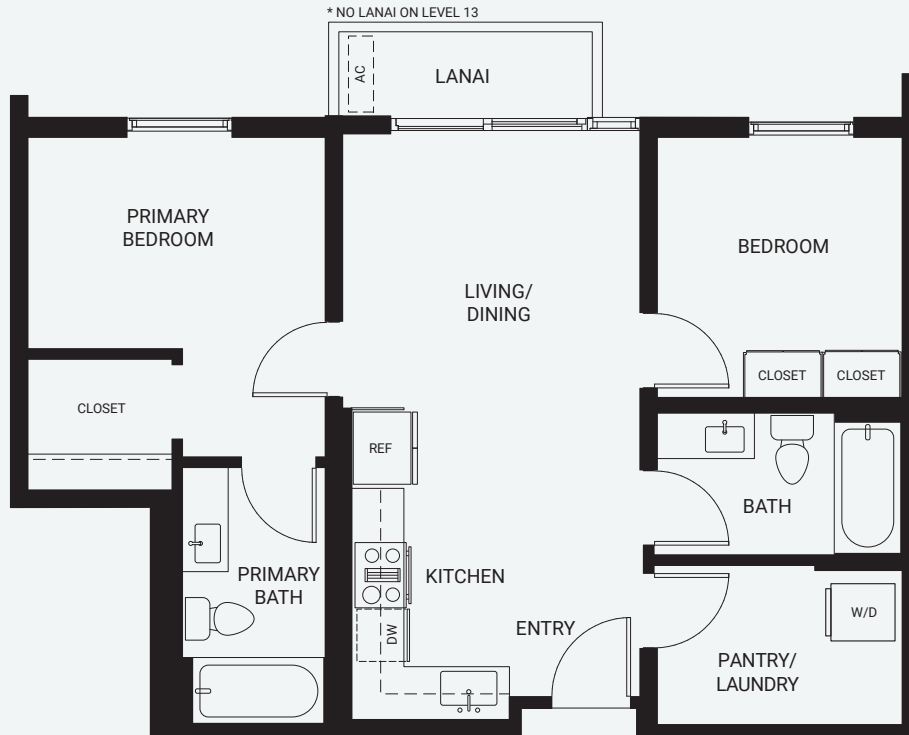
Tower

FLOORS 13 - 43



Residence 20

2 Bedroom/2 Bath
 Total: 742 Sq. Ft.
 Interior: 701 Sq. Ft.
 Lanai: 41 Sq. Ft.*



Sales Gallery
 Ala Moana Center, Level 3 Ewa Wing
 1450 Ala Moana Blvd. Suite 3505, Honolulu, Hawaii 96814

808-751-2599
 KuileiPlace.com

Exclusive Project Broker: COMPASS RB-23206. Courtesy to qualifying brokers; see Project Broker for details.

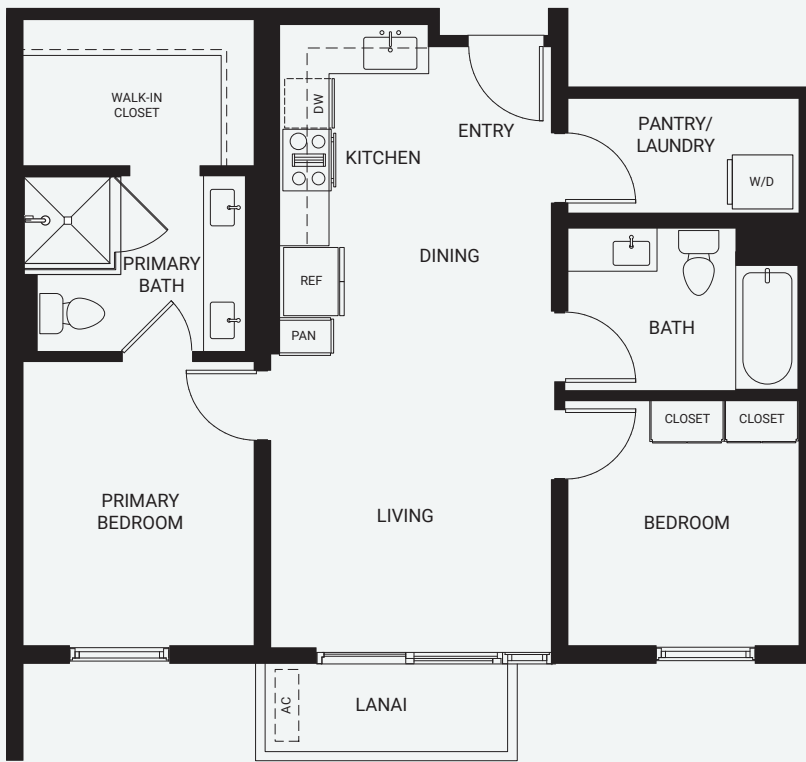
DISCLAIMER: Kuilei Place ("Project") is a proposed condominium project that does not yet exist, and the development concepts therefore continue to evolve and are subject to change without notice. All figures, facts, information, and prices are approximate and may change at any time. All renderings, maps, site plans, photos, views, floor plans, graphic images, drawings, and other information depicted on this handout are illustrative only, are provided to assist the purchaser in visualizing the units and the Project, may not be accurately depicted, and are subject to change at any time. Visual depictions of the Project and units contained in this handout are artists' renderings and should not be relied upon in deciding to purchase a unit, and the developer makes no guarantee, representation, or warranty whatsoever that the Project and units depicted will ultimately appear as shown. All amenities are proposed only and access to any amenities may be subject to the payment of fees, membership requirements, and other restrictions. The developer does not own or control the land outside of the Project and does not guarantee the current or future use thereof. To the extent permitted by law, the developer disclaims all liability that may arise out of errors or omissions in the content of this handout, including claims for actual or consequential damages. This is not intended to be an offering or solicitation of sale in any jurisdiction where the Project is not registered in accordance with applicable law or where such offering or solicitation would otherwise be prohibited by law.

WARNING: THE CALIFORNIA DEPARTMENT OF REAL ESTATE HAS NOT INSPECTED, EXAMINED, OR QUALIFIED THIS OFFERING.



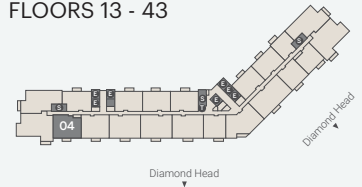
Residence 04

2 Bedroom/2 Bath
 Total: 801 Sq. Ft.
 Interior: 760 Sq. Ft.
 Lanai: 41 Sq. Ft.*

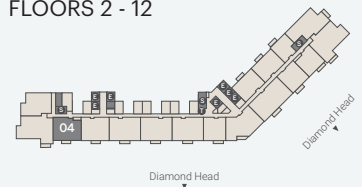


*Residence 104 - Private Yard, 321 Sq.Ft.

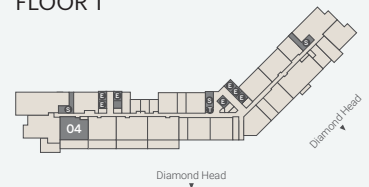
FLOORS 13 - 43



FLOORS 2 - 12



FLOOR 1



Sales Gallery
 Ala Moana Center, Level 3 Ewa Wing
 1450 Ala Moana Blvd. Suite 3505, Honolulu, Hawaii 96814

808-751-2599
 KuileiPlace.com

Exclusive Project Broker: COMPASS RB-23206. Courtesy to qualifying brokers; see Project Broker for details.

DISCLAIMER: Kuilei Place ("Project") is a proposed condominium project that does not yet exist, and the development concepts therefore continue to evolve and are subject to change without notice. All figures, facts, information, and prices are approximate and may change at any time. All renderings, maps, site plans, photos, views, floor plans, graphic images, drawings, and other information depicted on this handout are illustrative only, are provided to assist the purchaser in visualizing the units and the Project, may not be accurately depicted, and are subject to change at any time. Visual depictions of the Project and units contained in this handout are artists' renderings and should not be relied upon in deciding to purchase a unit, and the developer makes no guarantee, representation, or warranty whatsoever that the Project and units depicted will ultimately appear as shown. All amenities are proposed only and access to any amenities may be subject to the payment of fees, membership requirements, and other restrictions. The developer does not own or control the land outside of the Project and does not guarantee the current or future use thereof. To the extent permitted by law, the developer disclaims all liability that may arise out of errors or omissions in the content of this handout, including claims for actual or consequential damages. This is not intended to be an offering or solicitation of sale in any jurisdiction where the Project is not registered in accordance with applicable law or where such offering or solicitation would otherwise be prohibited by law.

WARNING: THE CALIFORNIA DEPARTMENT OF REAL ESTATE HAS NOT INSPECTED, EXAMINED, OR QUALIFIED THIS OFFERING.



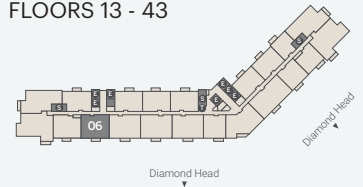
Residence 06

2 Bedroom/2 Bath
 Total: 822 Sq. Ft.
 Interior: 781 Sq. Ft.
 Lanai: 41 Sq. Ft.*

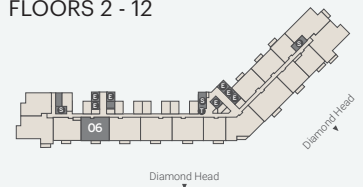


*Residence 106 - Private Yard, 324 Sq.Ft.

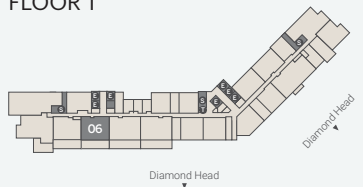
FLOORS 13 - 43



FLOORS 2 - 12



FLOOR 1



Sales Gallery
 Ala Moana Center, Level 3 Ewa Wing
 1450 Ala Moana Blvd. Suite 3505, Honolulu, Hawaii 96814

808-751-2599
KuileiPlace.com

Exclusive Project Broker: COMPASS RB-23206. Courtesy to qualifying brokers; see Project Broker for details.

DISCLAIMER: Kuilei Place ("Project") is a proposed condominium project that does not yet exist, and the development concepts therefore continue to evolve and are subject to change without notice. All figures, facts, information, and prices are approximate and may change at any time. All renderings, maps, site plans, photos, views, floor plans, graphic images, drawings, and other information depicted on this handout are illustrative only, are provided to assist the purchaser in visualizing the units and the Project, may not be accurately depicted, and are subject to change at any time. Visual depictions of the Project and units contained in this handout are artists' renderings and should not be relied upon in deciding to purchase a unit, and the developer makes no guarantee, representation, or warranty whatsoever that the Project and units depicted will ultimately appear as shown. All amenities are proposed only and access to any amenities may be subject to the payment of fees, membership requirements, and other restrictions. The developer does not own or control the land outside of the Project and does not guarantee the current or future use thereof. To the extent permitted by law, the developer disclaims all liability that may arise out of errors or omissions in the content of this handout, including claims for actual or consequential damages. This is not intended to be an offering or solicitation of sale in any jurisdiction where the Project is not registered in accordance with applicable law or where such offering or solicitation would otherwise be prohibited by law.

WARNING: THE CALIFORNIA DEPARTMENT OF REAL ESTATE HAS NOT INSPECTED, EXAMINED, OR QUALIFIED THIS OFFERING.



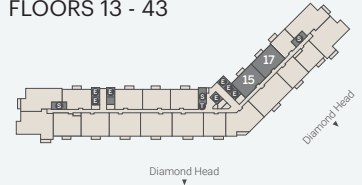
2.9

Tower

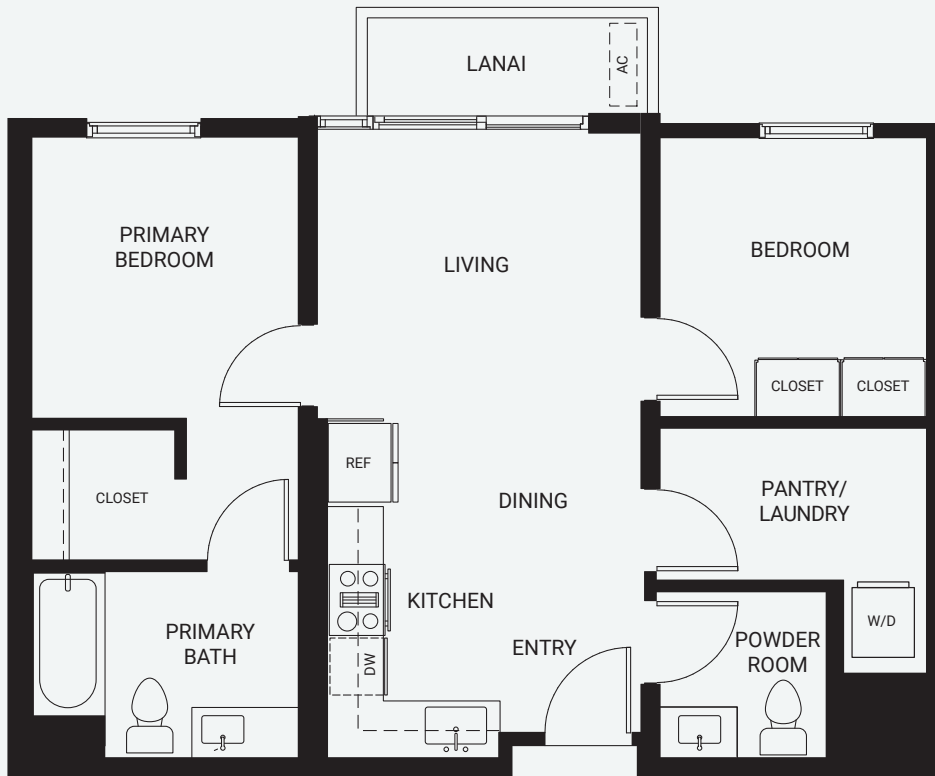
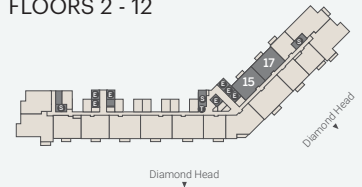
Residence 15, 17

2 Bedroom/1.5 Bath
Total: 737 Sq. Ft.
Interior: 696 Sq. Ft.
Lanai: 41 Sq. Ft.

FLOORS 13 - 43



FLOORS 2 - 12



Sales Gallery
Ala Moana Center, Level 3 Ewa Wing
1450 Ala Moana Blvd. Suite 3505, Honolulu, Hawaii 96814

808-751-2599
KuileiPlace.com

Exclusive Project Broker: COMPASS RB-23206. Courtesy to qualifying brokers; see Project Broker for details.

DISCLAIMER: Kuilei Place ("Project") is a proposed condominium project that does not yet exist, and the development concepts therefore continue to evolve and are subject to change without notice. All figures, facts, information, and prices are approximate and may change at any time. All renderings, maps, site plans, photos, views, floor plans, graphic images, drawings, and other information depicted on this handout are illustrative only, are provided to assist the purchaser in visualizing the units and the Project, may not be accurately depicted, and are subject to change at any time. Visual depictions of the Project and units contained in this handout are artists' renderings and should not be relied upon in deciding to purchase a unit, and the developer makes no guarantee, representation, or warranty whatsoever that the Project and units depicted will ultimately appear as shown. All amenities are proposed only and access to any amenities may be subject to the payment of fees, membership requirements, and other restrictions. The developer does not own or control the land outside of the Project and does not guarantee the current or future use thereof. To the extent permitted by law, the developer disclaims all liability that may arise out of errors or omissions in the content of this handout, including claims for actual or consequential damages. This is not intended to be an offering or solicitation of sale in any jurisdiction where the Project is not registered in accordance with applicable law or where such offering or solicitation would otherwise be prohibited by law.

WARNING: THE CALIFORNIA DEPARTMENT OF REAL ESTATE HAS NOT INSPECTED, EXAMINED, OR QUALIFIED THIS OFFERING.



3.1

Tower

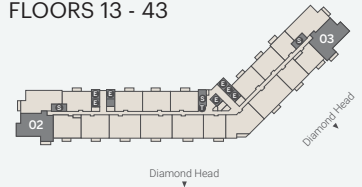
Residence 02, 03

3 Bedroom/2 Bath
Total: 1,120 Sq. Ft.
Interior: 1,075 Sq. Ft.
Lanai: 45 Sq. Ft.*

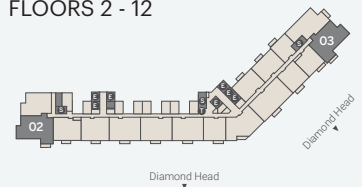


*Residence 102 - Private Yard, 281 Sq.Ft.

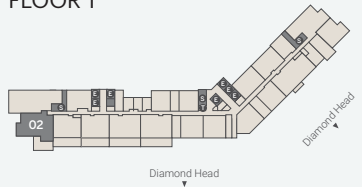
FLOORS 13 - 43



FLOORS 2 - 12



FLOOR 1



Sales Gallery

Ala Moana Center, Level 3 Ewa Wing
1450 Ala Moana Blvd. Suite 3505, Honolulu, Hawaii 96814

808-751-2599

KuileiPlace.com

Exclusive Project Broker: COMPASS RB-23206. Courtesy to qualifying brokers; see Project Broker for details.

DISCLAIMER: Kuilei Place ("Project") is a proposed condominium project that does not yet exist, and the development concepts therefore continue to evolve and are subject to change without notice. All figures, facts, information, and prices are approximate and may change at any time. All renderings, maps, site plans, photos, views, floor plans, graphic images, drawings, and other information depicted on this handout are illustrative only, are provided to assist the purchaser in visualizing the units and the Project, may not be accurately depicted, and are subject to change at any time. Visual depictions of the Project and units contained in this handout are artists' renderings and should not be relied upon in deciding to purchase a unit, and the developer makes no guarantee, representation, or warranty whatsoever that the Project and units depicted will ultimately appear as shown. All amenities are proposed only and access to any amenities may be subject to the payment of fees, membership requirements, and other restrictions. The developer does not own or control the land outside of the Project and does not guarantee the current or future use thereof. To the extent permitted by law, the developer disclaims all liability that may arise out of errors or omissions in the content of this handout, including claims for actual or consequential damages. This is not intended to be an offering or solicitation of sale in any jurisdiction where the Project is not registered in accordance with applicable law or where such offering or solicitation would otherwise be prohibited by law.

WARNING: THE CALIFORNIA DEPARTMENT OF REAL ESTATE HAS NOT INSPECTED, EXAMINED, OR QUALIFIED THIS OFFERING.



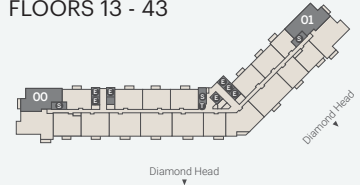
3.2

Tower

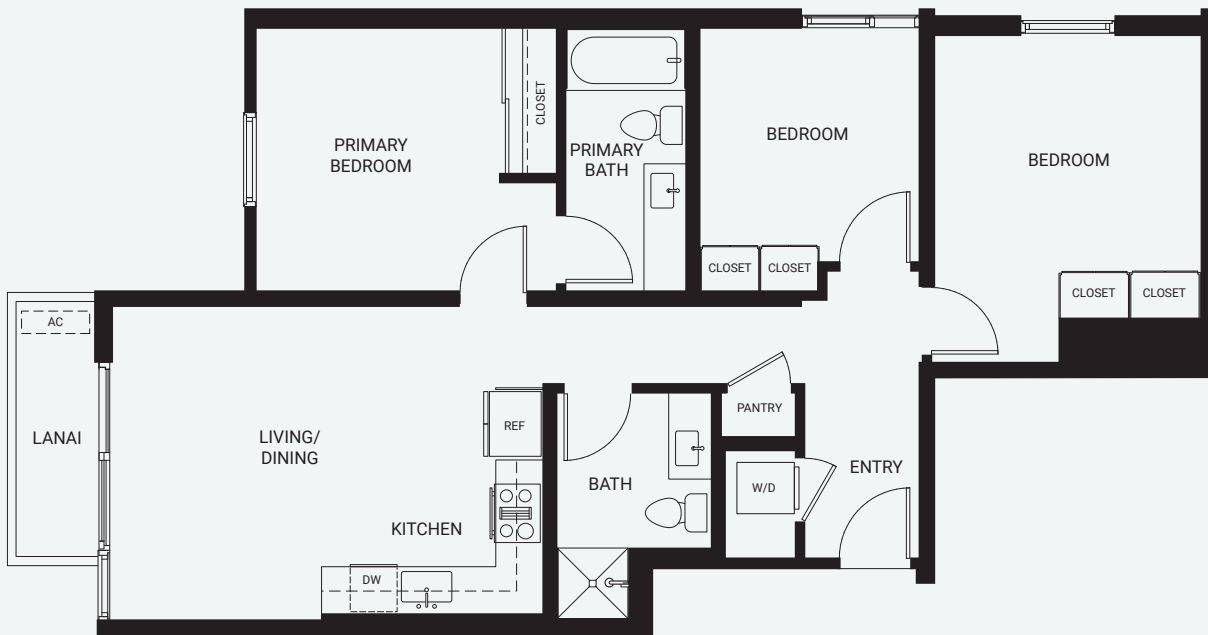
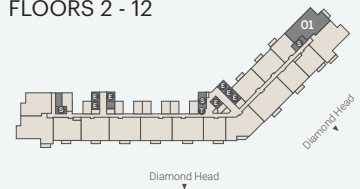
Residence 00, 01

3 Bedroom/2 Bath
Total: 970 Sq. Ft.
Interior: 925 Sq. Ft.
Lanai: 45 Sq. Ft.

FLOORS 13 - 43



FLOORS 2 - 12



Sales Gallery
Ala Moana Center, Level 3 Ewa Wing
1450 Ala Moana Blvd. Suite 3505, Honolulu, Hawaii 96814

808-751-2599
KuileiPlace.com

Exclusive Project Broker: COMPASS RB-23206. Courtesy to qualifying brokers; see Project Broker for details.

DISCLAIMER: Kuilei Place ("Project") is a proposed condominium project that does not yet exist, and the development concepts therefore continue to evolve and are subject to change without notice. All figures, facts, information, and prices are approximate and may change at any time. All renderings, maps, site plans, photos, views, floor plans, graphic images, drawings, and other information depicted on this handout are illustrative only, are provided to assist the purchaser in visualizing the units and the Project, may not be accurately depicted, and are subject to change at any time. Visual depictions of the Project and units contained in this handout are artists' renderings and should not be relied upon in deciding to purchase a unit, and the developer makes no guarantee, representation, or warranty whatsoever that the Project and units depicted will ultimately appear as shown. All amenities are proposed only and access to any amenities may be subject to the payment of fees, membership requirements, and other restrictions. The developer does not own or control the land outside of the Project and does not guarantee the current or future use thereof. To the extent permitted by law, the developer disclaims all liability that may arise out of errors or omissions in the content of this handout, including claims for actual or consequential damages. This is not intended to be an offering or solicitation of sale in any jurisdiction where the Project is not registered in accordance with applicable law or where such offering or solicitation would otherwise be prohibited by law.

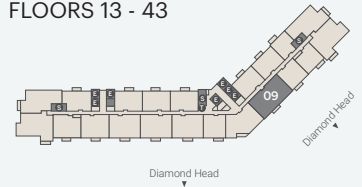
WARNING: THE CALIFORNIA DEPARTMENT OF REAL ESTATE HAS NOT INSPECTED, EXAMINED, OR QUALIFIED THIS OFFERING.



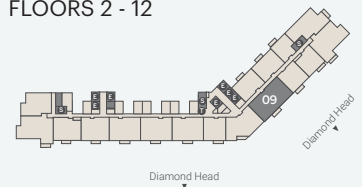
3.3

Tower

FLOORS 13 - 43



FLOORS 2 - 12



Residence 09

3 Bedroom/2 Bath
 Total: 1,167 Sq. Ft.
 Interior: 1,122 Sq. Ft.
 Lanai: 45 Sq. Ft.



Sales Gallery
 Ala Moana Center, Level 3 Ewa Wing
 1450 Ala Moana Blvd. Suite 3505, Honolulu, Hawaii 96814

808-751-2599
KuileiPlace.com

Exclusive Project Broker: COMPASS RB-23206. Courtesy to qualifying brokers; see Project Broker for details.

DISCLAIMER: Kuilei Place ("Project") is a proposed condominium project that does not yet exist, and the development concepts therefore continue to evolve and are subject to change without notice. All figures, facts, information, and prices are approximate and may change at any time. All renderings, maps, site plans, photos, views, floor plans, graphic images, drawings, and other information depicted on this handout are illustrative only, are provided to assist the purchaser in visualizing the units and the Project, may not be accurately depicted, and are subject to change at any time. Visual depictions of the Project and units contained in this handout are artists' renderings and should not be relied upon in deciding to purchase a unit, and the developer makes no guarantee, representation, or warranty whatsoever that the Project and units depicted will ultimately appear as shown. All amenities are proposed only and access to any amenities may be subject to the payment of fees, membership requirements, and other restrictions. The developer does not own or control the land outside of the Project and does not guarantee the current or future use thereof. To the extent permitted by law, the developer disclaims all liability that may arise out of errors or omissions in the content of this handout, including claims for actual or consequential damages. This is not intended to be an offering or solicitation of sale in any jurisdiction where the Project is not registered in accordance with applicable law or where such offering or solicitation would otherwise be prohibited by law.

WARNING: THE CALIFORNIA DEPARTMENT OF REAL ESTATE HAS NOT INSPECTED, EXAMINED, OR QUALIFIED THIS OFFERING.



1.3

Midrise

FLOORS 2 - 12



Residence 51, 53, 55, 59, 61, 63

1 Bedroom/1 Bath
Total: 489-494 Sq. Ft.



Sales Gallery

Ala Moana Center, Level 3 Ewa Wing
1450 Ala Moana Blvd. Suite 3505, Honolulu, Hawaii 96814

808-751-2599
KuileiPlace.com

Exclusive Project Broker: COMPASS RB-23206. Courtesy to qualifying brokers; see Project Broker for details.

DISCLAIMER: Kuilei Place ("Project") is a proposed condominium project that does not yet exist, and the development concepts therefore continue to evolve and are subject to change without notice. All figures, facts, information, and prices are approximate and may change at any time. All renderings, maps, site plans, photos, views, floor plans, graphic images, drawings, and other information depicted on this handout are illustrative only, are provided to assist the purchaser in visualizing the units and the Project, may not be accurately depicted, and are subject to change at any time. Visual depictions of the Project and units contained in this handout are artists' renderings and should not be relied upon in deciding to purchase a unit, and the developer makes no guarantee, representation, or warranty whatsoever that the Project and units depicted will ultimately appear as shown. All amenities are proposed only and access to any amenities may be subject to the payment of fees, membership requirements, and other restrictions. The developer does not own or control the land outside of the Project and does not guarantee the current or future use thereof. To the extent permitted by law, the developer disclaims all liability that may arise out of errors or omissions in the content of this handout, including claims for actual or consequential damages. This is not intended to be an offering or solicitation of sale in any jurisdiction where the Project is not registered in accordance with applicable law or where such offering or solicitation would otherwise be prohibited by law.

WARNING: THE CALIFORNIA DEPARTMENT OF REAL ESTATE HAS NOT INSPECTED, EXAMINED, OR QUALIFIED THIS OFFERING.



2.5

Midrise

FLOORS 2 - 12



Residence 52, 54, 56, 60, 62

2 Bedroom/1 Bath
Total: 723 Sq. Ft.



Sales Gallery

Ala Moana Center, Level 3 Ewa Wing
1450 Ala Moana Blvd. Suite 3505, Honolulu, Hawaii 96814

808-751-2599
KuileiPlace.com

Exclusive Project Broker: COMPASS RB-23206. Courtesy to qualifying brokers; see Project Broker for details.

DISCLAIMER: Kuilei Place ("Project") is a proposed condominium project that does not yet exist, and the development concepts therefore continue to evolve and are subject to change without notice. All figures, facts, information, and prices are approximate and may change at any time. All renderings, maps, site plans, photos, views, floor plans, graphic images, drawings, and other information depicted on this handout are illustrative only, are provided to assist the purchaser in visualizing the units and the Project, may not be accurately depicted, and are subject to change at any time. Visual depictions of the Project and units contained in this handout are artists' renderings and should not be relied upon in deciding to purchase a unit, and the developer makes no guarantee, representation, or warranty whatsoever that the Project and units depicted will ultimately appear as shown. All amenities are proposed only and access to any amenities may be subject to the payment of fees, membership requirements, and other restrictions. The developer does not own or control the land outside of the Project and does not guarantee the current or future use thereof. To the extent permitted by law, the developer disclaims all liability that may arise out of errors or omissions in the content of this handout, including claims for actual or consequential damages. This is not intended to be an offering or solicitation of sale in any jurisdiction where the Project is not registered in accordance with applicable law or where such offering or solicitation would otherwise be prohibited by law.

WARNING: THE CALIFORNIA DEPARTMENT OF REAL ESTATE HAS NOT INSPECTED, EXAMINED, OR QUALIFIED THIS OFFERING.



2.6

Midrise

FLOORS 2 - 12



Residence 58

2 Bedroom/1 Bath
Total: 763 Sq. Ft.



Sales Gallery
Ala Moana Center, Level 3 Ewa Wing
1450 Ala Moana Blvd. Suite 3505, Honolulu, Hawaii 96814

808-751-2599
KuileiPlace.com

Exclusive Project Broker: COMPASS RB-23206. Courtesy to qualifying brokers; see Project Broker for details.

DISCLAIMER: Kuilei Place ("Project") is a proposed condominium project that does not yet exist, and the development concepts therefore continue to evolve and are subject to change without notice. All figures, facts, information, and prices are approximate and may change at any time. All renderings, maps, site plans, photos, views, floor plans, graphic images, drawings, and other information depicted on this handout are illustrative only, are provided to assist the purchaser in visualizing the units and the Project, may not be accurately depicted, and are subject to change at any time. Visual depictions of the Project and units contained in this handout are artists' renderings and should not be relied upon in deciding to purchase a unit, and the developer makes no guarantee, representation, or warranty whatsoever that the Project and units depicted will ultimately appear as shown. All amenities are proposed only and access to any amenities may be subject to the payment of fees, membership requirements, and other restrictions. The developer does not own or control the land outside of the Project and does not guarantee the current or future use thereof. To the extent permitted by law, the developer disclaims all liability that may arise out of errors or omissions in the content of this handout, including claims for actual or consequential damages. This is not intended to be an offering or solicitation of sale in any jurisdiction where the Project is not registered in accordance with applicable law or where such offering or solicitation would otherwise be prohibited by law.

WARNING: THE CALIFORNIA DEPARTMENT OF REAL ESTATE HAS NOT INSPECTED, EXAMINED, OR QUALIFIED THIS OFFERING.



2.10

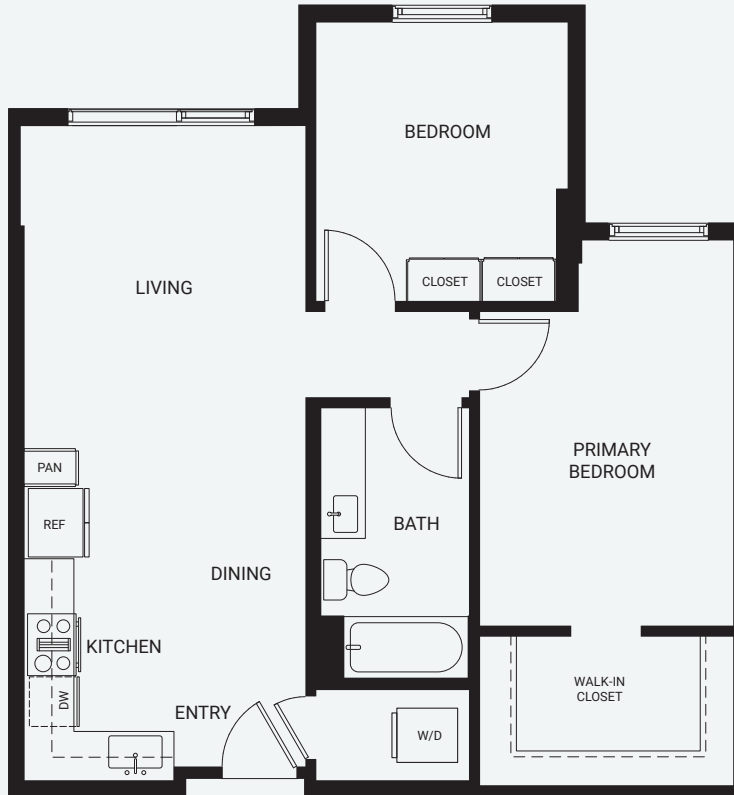
Midrise

FLOORS 2 - 12



Residence 50 & 64

2 Bedroom/1 Bath
Total: 769 Sq. Ft.



Sales Gallery

Ala Moana Center, Level 3 Ewa Wing
1450 Ala Moana Blvd. Suite 3505, Honolulu, Hawaii 96814

808-751-2599
KuileiPlace.com

Exclusive Project Broker: COMPASS RB-23206. Courtesy to qualifying brokers; see Project Broker for details.

DISCLAIMER: Kuilei Place ("Project") is a proposed condominium project that does not yet exist, and the development concepts therefore continue to evolve and are subject to change without notice. All figures, facts, information, and prices are approximate and may change at any time. All renderings, maps, site plans, photos, views, floor plans, graphic images, drawings, and other information depicted on this handout are illustrative only, are provided to assist the purchaser in visualizing the units and the Project, may not be accurately depicted, and are subject to change at any time. Visual depictions of the Project and units contained in this handout are artists' renderings and should not be relied upon in deciding to purchase a unit, and the developer makes no guarantee, representation, or warranty whatsoever that the Project and units depicted will ultimately appear as shown. All amenities are proposed only and access to any amenities may be subject to the payment of fees, membership requirements, and other restrictions. The developer does not own or control the land outside of the Project and does not guarantee the current or future use thereof. To the extent permitted by law, the developer disclaims all liability that may arise out of errors or omissions in the content of this handout, including claims for actual or consequential damages. This is not intended to be an offering or solicitation of sale in any jurisdiction where the Project is not registered in accordance with applicable law or where such offering or solicitation would otherwise be prohibited by law.

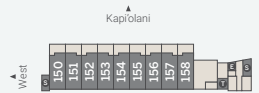
WARNING: THE CALIFORNIA DEPARTMENT OF REAL ESTATE HAS NOT INSPECTED, EXAMINED, OR QUALIFIED THIS OFFERING.



Loft Floor Plan

Midrise

FLOOR 1

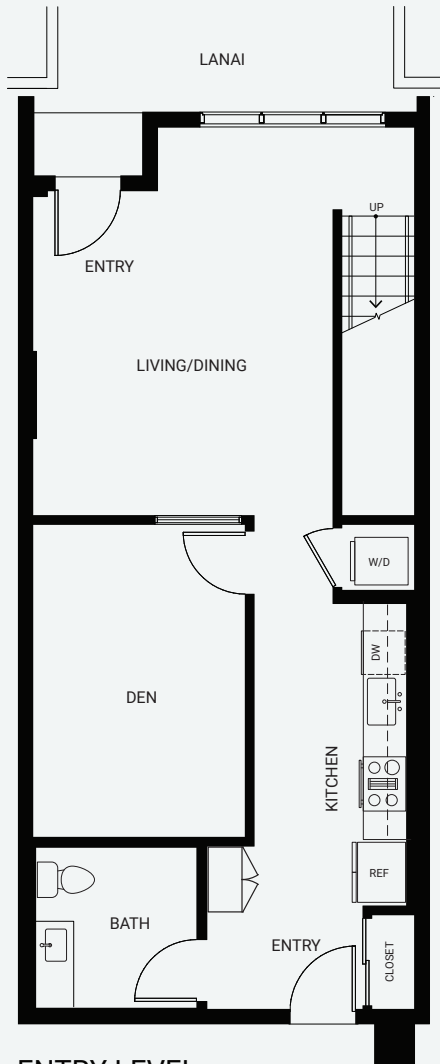


Residence 151-158

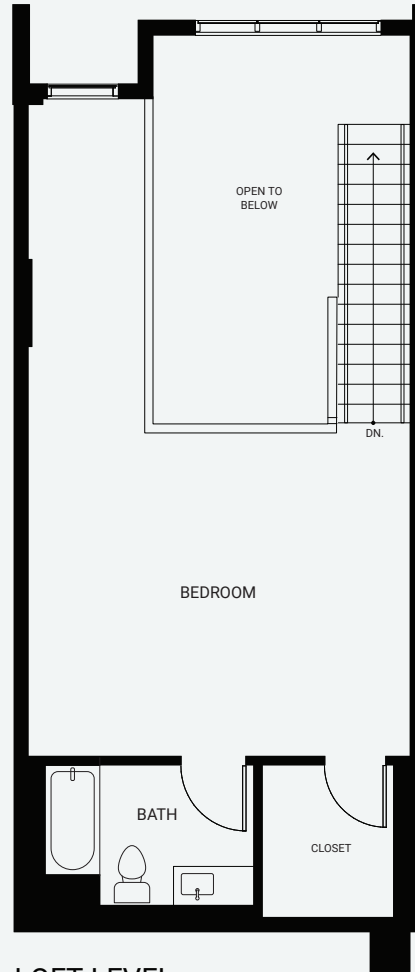
1 Bedroom Loft + Den/1.5 Bath
Total: 1,316 Sq. Ft.
Interior: 1,166 Sq.Ft.
Lanai: 150 Sq.Ft.

Residence 150

Total: 1,318 Sq. Ft.
Interior: 1,171 Sq.Ft.
Lanai: 147 Sq.Ft.



ENTRY LEVEL



LOFT LEVEL



Sales Gallery

Ala Moana Center, Level 3 Ewa Wing
1450 Ala Moana Blvd. Suite 3505, Honolulu, Hawaii 96814

808-751-2599

KuileiPlace.com

Exclusive Project Broker: COMPASS RB-23206. Courtesy to qualifying brokers; see Project Broker for details.

DISCLAIMER: Kuilei Place ("Project") is a proposed condominium project that does not yet exist, and the development concepts therefore continue to evolve and are subject to change without notice. All figures, facts, information, and prices are approximate and may change at any time. All renderings, maps, site plans, photos, views, floor plans, graphic images, drawings, and other information depicted on this handout are illustrative only, are provided to assist the purchaser in visualizing the units and the Project, may not be accurately depicted, and are subject to change at any time. Visual depictions of the Project and units contained in this handout are artists' renderings and should not be relied upon in deciding to purchase a unit, and the developer makes no guarantee, representation, or warranty whatsoever that the Project and units depicted will ultimately appear as shown. All amenities are proposed only and access to any amenities may be subject to the payment of fees, membership requirements, and other restrictions. The developer does not own or control the land outside of the Project and does not guarantee the current or future use thereof. To the extent permitted by law, the developer disclaims all liability that may arise out of errors or omissions in the content of this handout, including claims for actual or consequential damages. This is not intended to be an offering or solicitation of sale in any jurisdiction where the Project is not registered in accordance with applicable law or where such offering or solicitation would otherwise be prohibited by law.

WARNING: THE CALIFORNIA DEPARTMENT OF REAL ESTATE HAS NOT INSPECTED, EXAMINED, OR QUALIFIED THIS OFFERING.

