

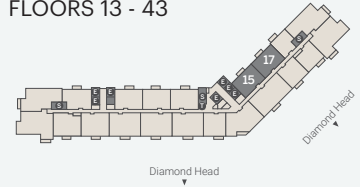
# 2.9

# Tower

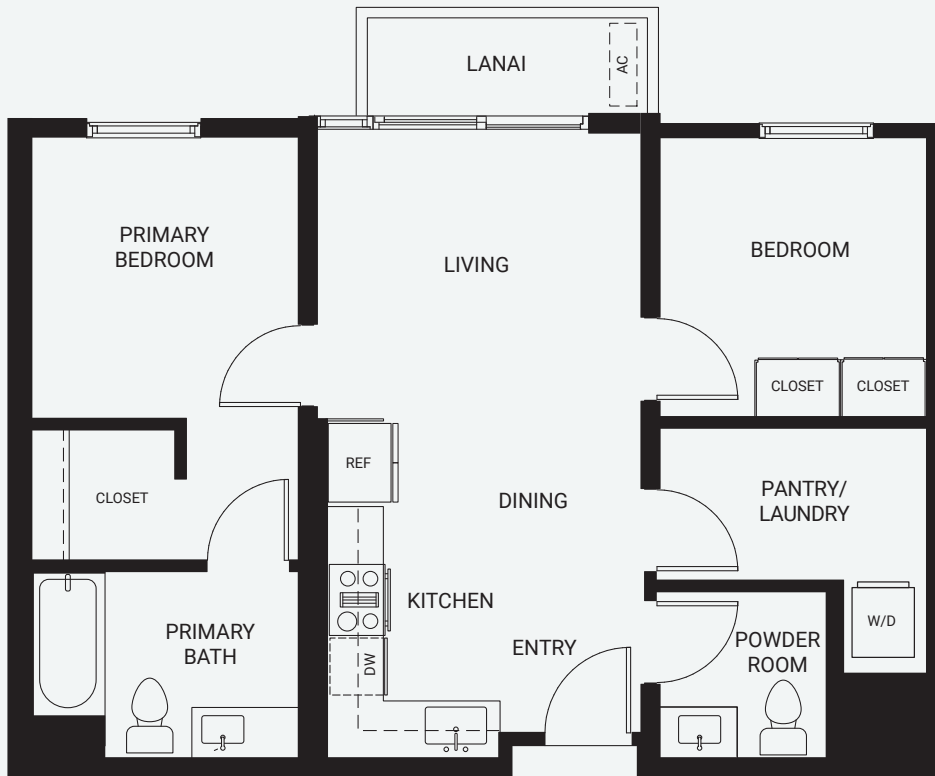
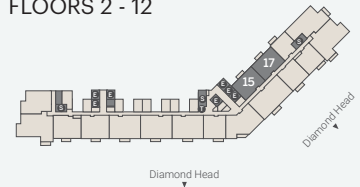
## Residence 15, 17

2 Bedroom/1.5 Bath  
 Total: 737 Sq. Ft.  
 Interior: 696 Sq. Ft.  
 Lanai: 41 Sq. Ft.

FLOORS 13 - 43



FLOORS 2 - 12



**Sales Gallery**  
 Ala Moana Center, Level 3 Ewa Wing  
 1450 Ala Moana Blvd. Suite 3505, Honolulu, Hawaii 96814

**808-751-2599**  
**KuileiPlace.com**

Exclusive Project Broker: COMPASS RB-23206. Courtesy to qualifying brokers; see Project Broker for details.

DISCLAIMER: Kuilei Place ("Project") is a proposed condominium project that does not yet exist, and the development concepts therefore continue to evolve and are subject to change without notice. All figures, facts, information, and prices are approximate and may change at any time. All renderings, maps, site plans, photos, views, floor plans, graphic images, drawings, and other information depicted on this handout are illustrative only, are provided to assist the purchaser in visualizing the units and the Project, may not be accurately depicted, and are subject to change at any time. Visual depictions of the Project and units contained in this handout are artists' renderings and should not be relied upon in deciding to purchase a unit, and the developer makes no guarantee, representation, or warranty whatsoever that the Project and units depicted will ultimately appear as shown. All amenities are proposed only and access to any amenities may be subject to the payment of fees, membership requirements, and other restrictions. The developer does not own or control the land outside of the Project and does not guarantee the current or future use thereof. To the extent permitted by law, the developer disclaims all liability that may arise out of errors or omissions in the content of this handout, including claims for actual or consequential damages. This is not intended to be an offering or solicitation of sale in any jurisdiction where the Project is not registered in accordance with applicable law or where such offering or solicitation would otherwise be prohibited by law.

WARNING: THE CALIFORNIA DEPARTMENT OF REAL ESTATE HAS NOT INSPECTED, EXAMINED, OR QUALIFIED THIS OFFERING.

